

# ELEVATOR EQUIPMENT

201 1st Ave S,  
Colfax, ND 58018

# AUCTION

TIMED ONLINE

OPENS: Friday, February 12

**CLOSES: MONDAY, FEBRUARY 22 | 12PM** 2021

**PREVIEW:** Friday, February 12 - Monday, February 22 from 8AM-5PM / **LOADOUT:** Monday, February 22 - Monday, March 1 from 8AM-5PM

## TRACK TRACTOR

**2012 Challenger MT865C**, deluxe cab, leather, buddy seat, 5 hyd., return flow, air seeder pin hookup, integrated auto steer, CFX750 Trimble display, hyd. wide swing drawbar, (32) front suitcase weights, front pull through tow cable, HD lights, front idler weights, 36" tracks at 45%, 3,820 hrs., Butler service records available, S/NAGCCO865KCNKG1157

## MFWD & 2WD TRACTORS

**2004 John Deere 7920**, MFWD, deluxe cab, buddy seat, IVT, LH reverser, 4 hyd., 3 pt., quick hitch, 540/1000 PTO, diff lock, integrated auto steer, (12) front weights, rear wheel weights, front fenders, 420/90R30 front tires, 480/80R46 duals, 5,907 hrs., recently serviced, S/NRW7920D018661

**1971 IHC 1466 Turbo Diesel**, CAH, 8 spd., TA, 2 hyd., 3 pt., 540/1000 PTO, DuAl loader, 8' bucket, 11:00-16 front tires, 20.8-38 rear tires, 6,026 hrs., S/N2650116U009803

## SEMI TRACTORS

**2002 Peterbilt 385 factory day cab**, C15 Cat, 9 spd., engine brake, air ride, air slide 5th, twin aluminum fuel tanks, 190" WB, full coverage fenders, 295/75R22.5 tires on steel rims, 658,149 miles

**1999 Peterbilt 377 tandem axle day cab**, 3406E Cat, 10 spd., engine brake, air susp., air slide 5th, air shift PTO, diff lock, cruise, dual aluminum fuel tanks, 2-line wet kit, 190" WB, full fenders, 295/75R22.5 tires on front aluminum/rear steel rims, shows 27,092 miles

**1999 Volvo VNM64T tandem axle day cab**, M11 Cummins, Eaton 10 spd., engine brake, air ride susp., air shift PTO, diff lock, 3:90 rears, cruise, dual aluminum fuel tanks, 2-line wet kit, 168" WB, shows 866,429 miles, new air cooler, radiator, turbo, fan housing, fan & A/C 2 years ago, engine rebuilt approx. 50,000 miles ago

**1991 IHC 8100 tandem axle day cab**, L10 Cummins, 9 spd., air ride, air slide 5th, air shift PTO, cruise, diff lock, 152" WB, 2-line wet kit, Saf-T-Pull hitch, half fenders, 275/80R22.5 tires on steel rims, shows 623,340 miles

**1990 Mack CH613 factory day cab**, E-6 350 Mack, 9 spd., engine brake, air ride, air slide 5th, wet kit, twin aluminum fuel tanks, 190" WB, 1/4 fenders, 11R24.5 tires, outside aluminum rims, 502,886 miles

## FERTILIZER TENDER TRUCKS

**1999 Freightliner FLD120 twin screw day cab**, ISM Cummins, 10 spd.,

## FERTILIZER TENDER TRUCKS

air ride, wet kit, Tyler 16 ton twin compartment, hyd. fold Side Shooter, roll tarp, 295/75R22.5 tires on steel rims, 594,812 miles

**1995 Kenworth T800 tri-axle fertilizer tender**, M11 Cummins, Eaton 10 spd., engine brake, air ride, cruise, diff lock, Willmar Side Shooter 16 ton fertilizer tender, side discharge auger, electric roll tarp, poly fenders, air up/down pusher axle w/255/70R22.5 tires, 295/75R22.5 tires on steel rims, shows 517,903 miles

**1992 IHC 8100 twin screw**, L10 Cummins, 10 spd., air ride, aluminum fuel tank, wet kit, Tyler 16 ton twin compartment tender, rear hyd. 8" discharge auger, electric roll tarp, rear controls, 295/75R22.5 tires on steel rims, 271,678 miles

**1992 IHC 8100 twin screw**, L10 Cummins, 9 spd., air ride, aluminum fuel tank, wet kit, full coverage fenders, Willmar 16 ton Side Shooter 4 compartment tender, electric roll tarp, hyd. rear Side Shooter auger, 11R22.5 tires on steel rims, 632,033 miles

## PICKUPS

**2008 Ford F250**, Super Duty XL, reg. cab, 5.4L Triton V8, automatic, 4WD, lockouts, cloth interior, no end gate, shock hitch, 133,142 actual miles

**1999 Ford F250**, Super Duty, reg. cab, Triton V10, 5 spd. manual, 4WD, lockouts, shock hitch, 197,204 miles

**1995 Ford F250**, XL, reg. cab, 5.8L gas, 5 spd., manual, 4WD, 8' box, 235/85R16 tires, shows 196,804 miles, New clutch

**2002 Ford F350**, Super Duty, reg. cab, 5.4L Triton, automatic, 4WD, lockouts, flow through end gate, shock hitch, 292,067 miles, coolant leaks, uses oil

## HOPPER BOTTOM TRAILERS

**2009 Merritt MVT hopper bottom**, 38-1/2"x96"x68", ag hopper, spring ride, electric roll tarp, Rapat rear discharge conveyor, double row lights, sight glass, 11R24.5 tires on steel rims

**2007 Merritt MVT tandem axle aluminum hopper bottom**, 38-1/2"x96"x68", ag hoppers, spring susp., electric roll tarp, Rapat SS belt conveyor, rear discharge, hyd. controls, sight glasses, 11R24.5 tires on steel rims

**2005 Merritt MVT tandem axle aluminum hopper bottom**, 42"x96"x68", ag hoppers, air susp., Shur-Co 4500 HD electric roll tarp w/remote, air scale, 11R24.5 tires on steel rims

## OTHER TRAILERS

**1994 Trailmobile 481 tandem slider**, air ride, (2) 3,000 gal. poly tanks, (2) 275 gal. shuttles, twin 12v pumps, twin SS BatchBoy systems w/2" plumbing, 3" transfer, 3" plumbing, 285/75R24.5 tires, outside aluminum rims

**1998 Frontier tandem axle car trailer**, 18'x95", spring susp., wood deck, slide-in ramps, spare tire, 7.50-16 tires on 8-bolt rims

## SPRAYERS & SPREADERS

**2015 Ag Chem Rogator RG1300B self-propelled sprayer**, 120' susp. boom, 1,300 gal. SS tank, rinse tank, 20" spacing, 5-nozzle bodies, hyd. tread adj., fence row nozzles, PinPoint nozzle control, AccuBoom section control, 7-section control, auto boom height control, ride controls, traction control, 3" front & side fill, chemical inductor, Raven Viper 4 touch screen display, Raven SmarTrax auto steer, 380/90R46 tires, 2,060 engine hrs., recently serviced, S/NAGCA1300LFNSL1130

**2012 Ag Chem TerraGator 8300 floater**, air ride cab, Siso diesel, CVT, 70' booms, single bin dry box, integrated auto steer, Ag Leader display & controller, Trimble CFX-750 display, Nav controller, rear camera w/display, foam markers, 3,428 engine hrs., recently serviced, S/NAGCA8300LCNS1113

**2009 Ag Chem TerraGator 8203 floater**, air ride cab, Cat diesel, 70' booms, single bin dry box, electric roll tarp, Terra-Shift, Ag Leader display & controller, integrated auto steer, Trimble EZ-Guide 500 display, foam markers, 1000.50R25 tires, remfg. transmission in 2020, 2,584 engine hrs., recently serviced, S/NAGCA8203HNV001023

**2007 Ag Chem TerraGator 8203 floater**, Cat diesel, 70' booms, single bin dry box, electric roll tarp, Terra-Shift, air ride cab, Falcon II controller, John Deere brown box w/processor, SF1, 200 series ATU, foam markers, 1000.50R25 tires, 2,749 engine hrs., recently serviced, S/NACGA8203CN5001026

## NH3 & CHEMICAL EQUIPMENT

**Ag Systems Nitro-Master 3000 NH3 applicator**, 16x30", 3 pt., 3-section fold, spring loaded, lead coulters, rear hitch, Dickey John NH3 cooler, radar, S/N1057

**Shop-built 4-wheel liquid tender trailer**, 1,000 gal. poly tank, Banjo 2" pump, 11L-15 implement tires

**Shop-built tandem axle liquid tender trailer**, 1,000 gal. poly tank, walking tandem adj. axle, Honda 2" transfer pump, 12.5-15 implement tires

## GRAIN HANDLING EQUIPMENT

**Hutchinson grain pile loader**, 3 pt., 540 PTO, 10' intake, hyd. lift & spout controls, S/N959918

**1995 Walinga Agri-Vac 510 Std. grain vac**, 5", 1000 PTO, 205/70R15 tires, S/NMT510STD95036330, No pipe included

**Feterl 1272 auger**, 72'x12", low pro swing hopper, 540 PTO, electric hopper walker, hyd. lift, S/NW1272CSW00064

**Feterl 14120 auger**, 120'x14", end PTO drive, hyd. lift, std. hopper, w/drive over pit, double 10' augers, 2 pt., hyd. lift, 1000 PTO, 10' HD ramps, S/N14120CSW00028

**1999 Westfield MK130-91 low pro swing hopper**, 91'x13", hyd. hopper walker, hyd. lift, 540 PTO, S/N119686

**Westgo loadout auger**, 50'x8", 540 PTO

**2006 Batco 20105 low pro swing conveyor**, 105'x20" belt, hyd. hopper walker, hyd. lift, 540 PTO, 235/85R16 tires, S/N20383

**Batco 2085 belt conveyor**, 85'x20", hyd. lift, 540 PTO, std. hopper, S/N20579

**Rapat 3018 belt conveyor**, 30'x18" belt, 3 hp., 3 phase motor, S/NB40691

**Batco PS2500 hyd. drive over conveyor**, hyd. lift, receiver transport, S/N20055

**Rapat jump conveyor**, 23'x14-1/2", 115/230v, 2 hp., 1 phase electric motor

## ATV

**2010 Polaris Ranger XP800**, 4x4, soft top, 800cc EFI, half windshield, manual dump box, 26x9-12 tires, 10,418 miles, 12,241 hrs., S/N4XATH76A5A4902336

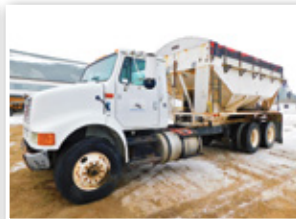
## TIRES

Set of 420/90R30 front duals & spacers, 12-bolt



**COLFAX FARMERS ELEVATOR**  
**Paul Sanderson, 701.640.3724**

or Brad Olstad at Steffes Group, 701.237.9173 or 701.238.0240



701.237.9173 | SteffesGroup.com

Steffes Group, Inc., 2000 Main Avenue East, West Fargo, ND 58078



TERMS: All items sold as is where is. Payment of cash or check must be made sale day before removal of items. Statements made auction day take precedence over all advertising. \$35 documentation fee applies to all titled vehicles. Titles will be mailed. Canadian buyers need a bank letter of credit to facilitate border transfer. Scott Steffes ND81, Brad Olstad ND319, Max Steffes ND999, Justin Ruth ND2019